



2017 Wet Wednesday Series

May 3 to August 30, 2017

Long Beach Yacht Club

Long Beach, CA

Sailing Instructions

The Wet Wednesday Series (WWS) will be hosted by Long Beach Yacht Club (LBYC). Long Beach Yacht Club is the Organizing Authority (OA). LBYC is located at 6201 Appian Way, Long Beach CA 90803. Phone number is (562) 598-9401. Club and Event information are available at www.lbyc.org.

1 RULES

- 1.1 The regatta will be governed by the "rules" as defined in the Racing Rules of Sailing, the PHRF of Southern California Class Rules, the One Design Class Rules of any one design class racing as a class, except as amended by this Notice of Race (NOR) and the Sailing Instructions (SI).
- 1.2 The PHRF Area C (Long Beach and Los Angeles Harbors) RLC Ratings shall be used. In the event a boat changes ratings in the middle of a series, the skipper shall file a revised entry form with the OA. The boat shall remain in the same class for the remainder of that series.
- 1.3 In the event of a conflict between the NOR and the SI, the SI shall prevail. **This changes RRS 63.7.**
- 1.4 Competitors are reminded that under the preamble of Part 2 of the RRS boats racing must comply with International Regulations for Preventing Collisions at Sea (IRPCAS) *or government right-of-way rules*.
- 1.5 Prior to a boat passing the navigational buoy at the entrance to Alamitos Bay Jetty (see SI 9.2), the following shall be mandatory:
 - a) The head of the spinnaker shall be on or below deck
 - b) Only one headsail shall be flown
 - c) Boats sixty (60) feet overall or larger shall carry headsails no larger than 105% LP.
- 1.6 US Sailing Prescription Appendix V shall apply for alternative penalties.

2 CLASS DIVISIONS AND ASSIGNMENTS

Based on the number of entries, the type of boats, PHRF ratings and other factors, the OA shall determine Class Divisions and Assignments. PHRF may be divided into a maximum of three (3) classes. There may be two (2) racing classes plus a Non-Spinnaker class. The class divisions, starting order and class flags will be posted at www.lbyc.org and on the Official Notice Board by 1600 hours on the date of the first race for each series and will remain unchanged for the series.

3 NOTICES TO COMPETITORS

Notices to competitors will be posted at www.lbyc.org, and on the official Regatta Notice Board located in the lower-floor hallway, North of the Regatta Room at Long Beach Yacht Club.

4 CHANGES TO SAILING INSTRUCTIONS

Any change to the SI, unless subject to RRS 90.2(c), will be posted at www.lbyc.org, and on the regatta notice board at LBYC before 0900 hours on the day it will take effect, except that any change to the schedule of races will be posted by 2000 hours on the day before it will take effect. Code flag Lima over a numeral pennant corresponding to the number of the change will be hoisted from the LBYC flag pole. In the event that oral instructions are needed on the water per RRS 90.2(c), the RC Signal Boat shall hoist code flag Lima and boats shall pass near the RC signal boat to receive and acknowledge receipt of instructions. The RC will also broadcast any changes over VHF Channel 68, prior to the first warning signal.

5 SIGNALS MADE ASHORE

Signals made ashore will be displayed on the Club's flagstaff.

6 SCHEDULE OF RACES

SERIES 1		
RACE	DATE	WARNING SIGNAL
1	May 3, 2017	1755
2	May 10, 2017	1755
3	May 17, 2017	1755
4	May 24, 2017	1755

5	May 31, 2017	1755
6	June 7, 2017	1755
SERIES 2		
1	June 14, 2017	1755
2	June 21, 2017	1755
3	June 28, 2017	1755
4	July 5, 2017	1755
5	July 12, 2017	1755
6	July 19, 2017	1755
SERIES 3		
1	July 26, 2017	1755
2	Aug. 2, 2017	1755
3	Aug. 9, 2017	1755
4	Aug. 16, 2017	1755
5	Aug. 23, 2017	1755
6	Aug. 30, 2017	1755

THE TIME OF THE WARNING SIGNAL FOR THE SOLING CLASS WILL BE NOTED IN THE SI ADDENDUM FOR THE SOLING CLASS.

7 RACING AREA

The racing area will be in the vicinity of Long Beach Harbor and Alamitos Bay.

8 COURSES

8.1 The courses will be described on the 2017 WWS Course Chart

8.2 The course designation for each class shall be posted using numeral placards on the RC signal boat no later than the warning signal.

8.3 The RC shall also hail the designated course for each class on VHF 68 prior the warning signal for each class.

9 MARKS

9.1 The marks are described on the 2017 WWS Course Chart. All marks shall be rounded to port, UNLESS noted with a small "s" which shall require rounding to starboard.

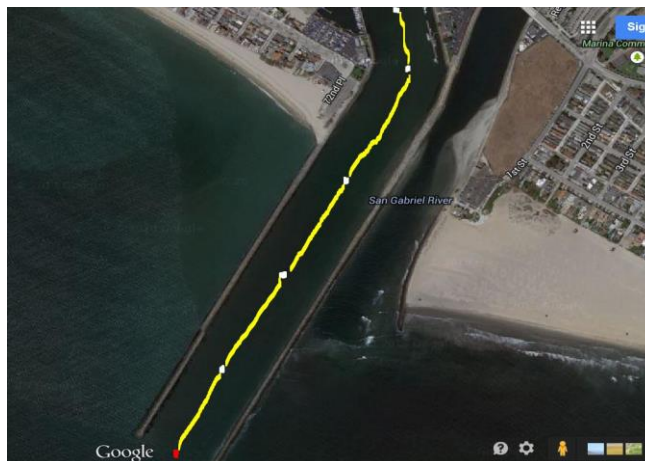
9.2 The navigational buoy at the entrance to Alamitos Bay Jetty shall be a mark of the course, rounded to port and subject to RRS 18

9.3 Upon entering the Alamitos Bay Jetty sailing towards the Finish, all boats shall comply with LBMC 16.08.630, which states that, "No Person shall cross or cause a vessel to cross the connecting line of buoys."

9.4 The imaginary line connecting the buoys from the entrance to the last buoy in the channel as shown in Diagram A below (yellow line) shall be considered a continuing obstruction subject to RRS 19.2 (c). No part of any boat shall cross this line.

9.5 In the event the navigational buoy at the entrance to Alamitos Bay Jetty is missing, a replacement mark will be placed in approximately the same location with code flag "M".

9.6 In the event that last mid channel buoy as shown in Diagram A below (the buoy located approximately abeam of the entrance to Basin 5 (ABYC) is missing, the RC may set an inflatable shape in its place. If no such buoy or replacement buoy is in place, the mid channel buoy prior to that shall be the end of the continuing obstruction.



10 THE START

- 10.1 Races will be started using rule 26. An attention signal will be given approximately 1 minute prior to the first warning signal. It is the intent of the RC to make the warning signal for each subsequent class approximately one (1) minute AFTER the starting signal for the class starting immediately before.
- 10.2 The starting line will be between a staff displaying an orange over white flag on the RC Signal Boat and a whip mark displaying an orange over white flag in the vicinity of Mark 38 on the 2017 WWS Course Chart.
- 10.4 The STARTING ORDER and CLASS FLAGS for each individual series will be published as an ADDENDUM for that series and posted at www.lbyc.org and on the Official Notice Board.
- 10.5 In the event that a class published in the ADDENDUM for an individual series has no boats come to the starting area, the RC Signal Boat hoist Code Flag Lima and broadcast the revised starting order on VHF Channel 68.

11 RECALLS

General recalls will be signaled in accordance with RRS 29.2. Individual recalls will be signaled in accordance with rule RRS 29.1. The RC may attempt to hail boats over early on VHF channel 68. Boats may be hailed by SAIL NUMBER or BOAT NAME. Failure of equipment, failure to hear a hail, delay in hailing or the order in which hails are given shall not be grounds for redress. **This changes RRS 62.1(a)**

12 THE FINISH

- 12.1 The finish line will be between the City lamp pole to the South of the LBYC flag pole and the South end of the concrete seawall opposite the Eastern porch of LBYC.
- 12.2 After finishing, a boat that must cross back through the finish line shall pass the mid-channel speed buoy to starboard.



- 12.3 The RC may shorten the course at the navigational buoy described in SI 9.2, as described in RRS 32.2.
- 12.4 The RC may shorten the course at the END of the continuing obstruction as described in SI 9.4 and 9.6. **This changes RRS 32.2.**
- 12.5 In the event that the RC decides to shorten the course as described in either 12.3 or 12.4, the finish line shall be between the respective buoy and a staff displaying a code flag "S" which is on an RC boat. The RC boat may not be anchored.

13 RETIREMENT

A boat that starts but does not finish a race shall make every attempt to notify the RC, another boat or LBYC. Failure to communicate retirement from a race may result in race or series disqualification.

14 TIME LIMIT

The time limit for all races in all series shall be 2100 hours. A boat that fails to finish before the time limit will be scored as Did Not Finish (DNF). **This changes RRS 35, A4 and A5.**

15 PROTESTS

15.1 Protest forms are available and shall be filed at the LBYC Front Desk.

15.2 The deadline for filing a protest is 60 minutes after the last boat finishes.

15.3 Parties to the protest will be notified of the time and place of the hearing. Failure to be present may result in the hearing proceeding without all parties present, as allowed by RRS 63.3(b).

16 PENALTIES

US Sailing Prescription Appendix V shall apply for alternative penalties. **This changes RRS 44.1.**

17 SCORING

17.1 The Low Point System of RRS Appendix A2 will apply, subject to the provisions below.

17.2 Six (6) races are scheduled for each series. When six (6) races have been completed, a boat's series score shall exclude her worst score. In the event that **less than** six (6) races are completed in a series, **all** races shall count for that series. Two (2) races must be completed to constitute a series. **This changes Rule A2.**

17.3 Boats that "Did Not Finish" (DNF), "Did Not Start" (DNS), "Retired After Finishing" (RAF), were "On Course Side" (OCS) or were "Disqualified" (DSQ) shall be scored points for the finishing place one more than the number of boats that came to the starting area. A boat that "Did Not Compete" (DNC) shall be scored points for the finishing place one more than the number of boats entered in the race. Boats that DNF shall report DNF to RC or LBYC front desk within 30 minutes of the last boat finish time. Failure to comply will result in a DNC for the race. **This changes RRS A5.**

18 RADIO COMMUNICATION

18.1 The RC shall broadcast starting order, course & OCS information to boats on the water on VHF Channel 68.

18.2 When in close proximity to commercial marine traffic, all boats shall monitor Long Beach/Los Angeles Harbor commercial marine traffic on VHF Channel 13 while racing.

19 PRIZES

Daily First trophies will be awarded for each race in series and for individual races following each race. Series trophies for each class will be awarded and based on number of entries. Series trophies will be awarded at the LBYC WWS Trophy Presentation Night on Sept. 13, 2017.

20 ASSUMPTION OF RISK; WAIVER, RELEASE AND INDEMNIFICATION

By entering this event, all racers agree to the following statement: "I understand and agree that yacht racing involves the use and operation of marine equipment in extremely close proximity to other vessels, marks, buoys, and the shoreline in varied weather conditions and differing sea states, and further, that the captains and crews aboard other vessels may not be proficient in the operation of their respective vessels. I further understand and agree that this event is organized by volunteers who are not maritime professionals and who may or may not have formal training in vessel operation or race organization, all of which involves a substantial element of risk, including the risk of property damage or of personal injury or death. Notwithstanding these and other elements of risk and inconvenience, I wish to participate in this event because of my interest in yacht racing and the enjoyment and fulfillment that I derive from yacht racing. Therefore, in consideration of the Race Organizers (as defined below) allowing me and my crew to compete in the event described in this Race Entry Form and/or Notice of Race (the "Event"), I, of and for myself and my Vessel, and my crew, my heirs, assigns, crewmembers, partners, and agents (collectively "We"), hereby agree to accept any and all risks associated with this Event with the knowledge of the dangers and risks involved. We further agree to release Long Beach Yacht Club, including their respective owners, affiliates, officers, directors, members, employees, agents, committee persons, and race officials (collectively, the "Race Organizers"), and hold them harmless and indemnify them, from any and all disputes, actions, claims, demands, liabilities (collectively, "Incidents"), judgments, and attorneys fees which are related to or arise directly or indirectly from the activities associated with this Event (to the extent that We are involved in or participated in, or are alleged to have been involved in or participated in such Incidents), **including, without limitation, those due to the negligence, fault or other act or omission of the Race Organizers.**" **US Sailing Prescription Rule 82 shall not apply to this Event.**

Waterfront Director
Wet Wednesday Chair

Rick Roberts raceoffice@lbyc.org
Lisa Meier

(562) 493-5173



2017 Wet Wednesday Series

SI ADDENDUM FOR THE SOLING CLASS

The following SIs are changed as follows;

SI 6 SCHEDULE OF RACES

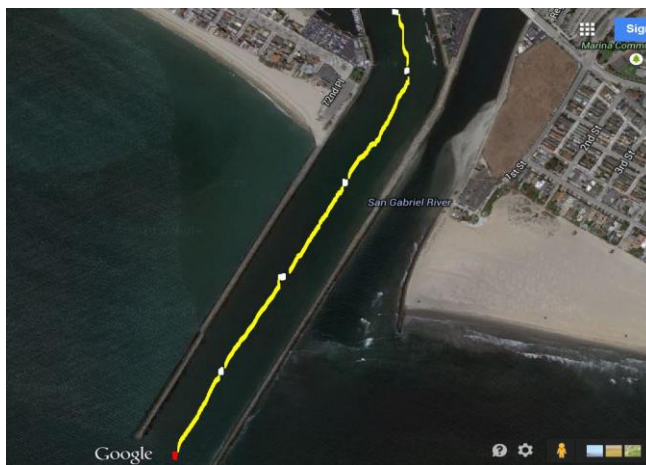
Add: THE TIME OF THE WARNING SIGNAL FOR THE SOLING CLASS WILL 1830 HOURS.

SI 8 COURSES

- 8.1 The courses are described on the 2017 WWS Course Chart.
- 8.2 The course designation for each class shall be posted using numeral placards on the RC signal boat no later than the warning signal.
- 8.3 The courses for the Soling Class are described on the 2017 Wet Wednesday Soling Course Chart.
- 8.4 The course designation for the Soling Class shall be a numeral pennant corresponding to the course number displayed on the LBYC Long Dock.
- 8.5 The RC shall also hail the designated course for each class on VHF 68 prior the warning signal for each class except for the Soling class which shall be a verbal hail from the LBYC Long Dock.

SI 9 MARKS

- 9.1 The marks are described on the 2017 WWS Course Chart. All marks shall be rounded to port, UNLESS noted with a small "s" which shall require rounding to starboard.
- 9.2 The marks for the Soling Class are described on the 2017 Wet Wednesday Soling Course Chart.
- 9.3 The navigational buoy at the entrance to Alamitos Bay Jetty shall be a mark of the course, rounded to port and subject to RRS 18
- 9.4 Upon entering the Alamitos Bay Jetty sailing towards the Finish, all boats shall comply with LBMC 16.08.630, which states that, "No Person shall cross or cause a vessel to cross the connecting line of buoys."
- 9.5 The imaginary line connecting the buoys from the entrance to the last buoy in the channel as shown in Diagram A below (yellow line) shall be considered a continuing obstruction subject to RRS 19.2 (c). No part of any boat shall cross this line.
- 9.6 In the event the navigational buoy at the entrance to Alamitos Bay Jetty is missing, a replacement mark will be placed in approximately the same location with code flag "M".
- 9.6 In the event that the last mid channel buoy as shown in Diagram A below (the buoy located approximately abeam of the entrance to Basin 5 (ABYC) is missing, the RC may set an inflatable shape in its place. If no such buoy or replacement buoy is in place, the mid channel buoy prior to that shall be the end of the continuing obstruction.



SI 10 THE START

- 10.1 Races will be started using rule 26. An attention signal will be given approximately 1 minute prior to the first warning signal. It is the intent of the RC to make the warning signal for each subsequent class approximately one (1) minute AFTER the starting signal for the class starting immediately before.
- 10.2 The starting line will be between a staff displaying an orange over white flag on the RC Signal Boat and a whip mark displaying an orange over white flag in the vicinity of Mark 38 on the 2017 WWS Course Chart.
- 10.3 The starting line for the Soling Class will be between the City lamp pole to the South of the LBYC flag pole and the South end of the concrete seawall opposite the Eastern porch of LBYC.
- 10.4 The STARTING ORDER and CLASS FLAGS for each individual series will be published as an ADDENDUM for that series and posted at www.lbyc.org and on the Official Notice Board.
- 10.5 In the event that a class published in the ADDENDUM for an individual series has no boats come to the starting area, the RC Signal Boat hoist Code Flag Lima and broadcast the revised starting order on VHF Channel 68.

SI 11 RECALLS

General recalls will be signaled in accordance with RRS 29.2. Individual recalls will be signaled in accordance with rule RRS 29.1. The RC may attempt to hail boats over early on VHF channel 68. For the Soling class, the RC will attempt a verbal hail to boats from the LBYC Long Dock. Boats may be hailed by SAIL NUMBER or BOAT NAME. Failure of equipment, failure to hear a hail, delay in hailing or the order in which hails are given shall not be ground for redress. **This changes RRS 62.1 (a)**