



2017 Catalina Island Series

May 20 to October 8, 2017
Long Beach Yacht Club
Long Beach, CA

Sailing Instructions - Course Annex (CA) Races 10 and 11

COURSE DESCRIPTION

RACE 10 - FALL LONG POINT RACE – Over

Saturday, October 7, 2017

FIRST WARNING Signal: 1100 hours.

COURSE:

Mark	Latitude	Longitude	Bearing	Range nm
Start	33 44.172n	118 08.246w		
LB Entrance	33 43.377n	118 11.057w	239°	2.47
G "1" to PORT	33 39.481n	118 13.687w	197°	4.57
Finish	33 24.252n	118 21.532w	202°	17.79

COURSE DISTANCE

24.83 NM

**LAT/LON COORDINATES ARE APPROXIMATE

The Finish Line will be as described in the SI.

The RC signal boat will be located at approximately 33 ° 24.252" N 118° 21.532 W. In the event the RC signal boat is not on station, boats shall record their time when this waypoint bears 270° magnetic and is within a distance of 100 feet.

Scored under PHRF Area C RLC Rating.

RACE 11 - FALL LONG POINT RACE - Return

Sunday, October 8, 2017

FIRST WARNING Signal: 1200 hours.

COURSE: **Scored under PHRF Area C OWC Rating.**

Mark	Latitude	Longitude	Bearing	Range nm
Start	33 24.252n	118 21.532w		
G "1" to STARBOARD	33 39.481n	118 13.687w	022°	17.79
LB Entrance	33 43.416n	118 10.917w	018°	4.57
Finish	33 44.172n	118 08.246w	056°	2.47

COURSE DISTANCE

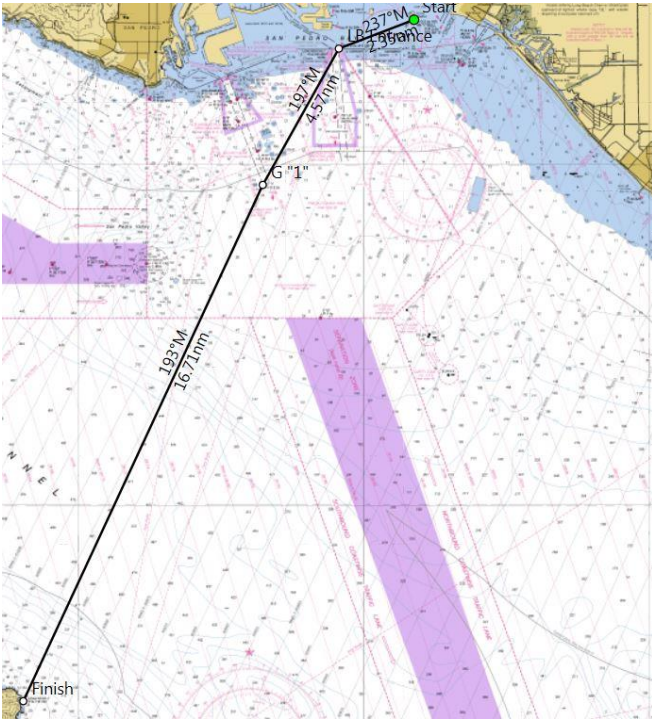
24.83 NM

**LAT/LON COORDINATES ARE APPROXIMATE

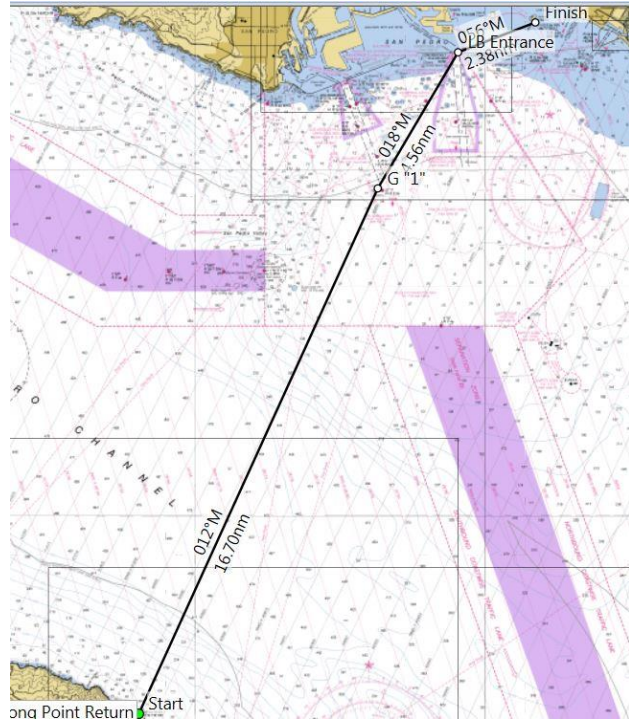
The Finish Line will be as described in the SI.

ORDER OF START AND CLASS FLAGS

CLASS	CLASS FLAG
PHRF C/CRUISING CLASS	White Flag with "C"
PHRF B	White Flag with "B"
ORCA	CODE FLAG OSCAR
PHRF A	White Flag with "A"



COURSE DIAGRAM – RACE 1



COURSE DIAGRAM – RACE 2