



2019 Catalina Island Series

May 18 to October 6, 2019

Long Beach Yacht Club

Long Beach, CA

Sailing Instructions - Course Annex (CA) Races 3 and 4

COURSE DESCRIPTION

RACE 3 - EMERALD BAY RACE –Over
Saturday, June 8, 2019

WARNING Signal for the PHRF C: 1100 hours.

COURSE: Start - PHRF C, B and ORCA boats have no intervening mark. PHRF A boats exit Queens Gate, leave Point Fermin Whistle Buoy to port. The Finish Line will be as described in SI 12.1. The RC signal boat will be located at approximately 33 ° 28.114 N 118° 31.312 W. In the event the RC signal boat is not on station, boats shall record their time when this waypoint bears 270° magnetic and is within a distance of 100 feet. **Scored under PHRF Area C RLC Rating.**

HANDICAP DISTANCES: 24.72 and 25.81 Nautical Miles.

RACE 4 - EMERALD BAY RACE - Return
Sunday, June 9, 2019

WARNING Signal for the PHRF C: 1200 hours.

COURSE: Start between the RC signal boat as described in SI 10.3 and a whip mark, inflatable buoy or float off Emerald Bay near Indian Rock. PHRF A boats leave Point Fermin Whistle Buoy to starboard. All classes enter Queen's Gate and finish. **Scored under PHRF Area C OWC Rating.**

HANDICAP DISTANCES: 25.27 and 25.81 Nautical Miles.

ORDER OF START AND CLASS FLAGS

CLASS	CLASS FLAG
PHRF C	White Flag with "C"
PHRF B	White Flag with "B"
ORCA/XS RACING	CODE FLAG OSCAR
PHRF A	White Flag with "A"

COURSES FOR PHRF A ARE IN BLACK. ALL OTHERS ARE IN BLUE

RACE 3 – LONG BEACH TO EMERALD BAY

PHRF A

Mark

	Latitude	Longitude	Bearing	Range nm
Start	33 44.238n	118 08.272w		
Queen's Gate	33 43.317n	118 10.995w	250°	2.46
Pt Fermin Buoy	33 41.781n	118 17.505w	256°	5.51
Finish	33 28.114n	118 31.312w	219°	17.84

Total Course

25.81

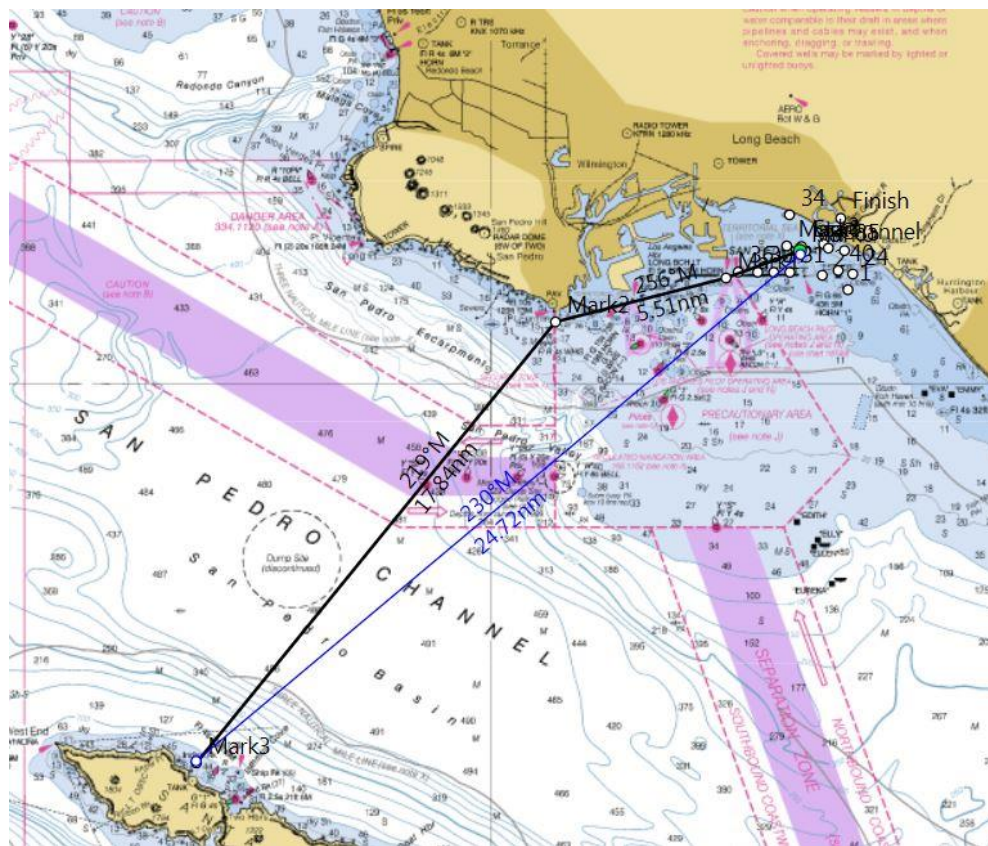
All Other Classes

Mark

	Latitude	Longitude	Bearing	Range nm
Start	33 44.238n	118 08.272w		
Finish	33 28.114n	118 31.312w	230°	24.72

Total Course

24.72



RACE 4 – EMERALD BAY TO LONG BEACH

PHRF A Only

Mark	Latitude	Longitude	Bearing	Range nm
Start	33 28.114n	118 31.312w		
Pt Fermin Buoy	33 41.926n	118 17.505w	028°	17.84
Queen's Gate	33 43.317n	118 10.995w	063°	5.51
Finish	33 44.238n	118 08.272w	056°	2.46

Total Course 25.81

All Other Classes

Mark	Latitude	Longitude	Bearing	Range nm
Start	33 28.114n	118 31.312w		
Queen's Gate	33 43.317n	118 10.995w	048°	22.81
Finish	33 44.238n	118 08.272w	068°	2.46

Total Course 25.27

